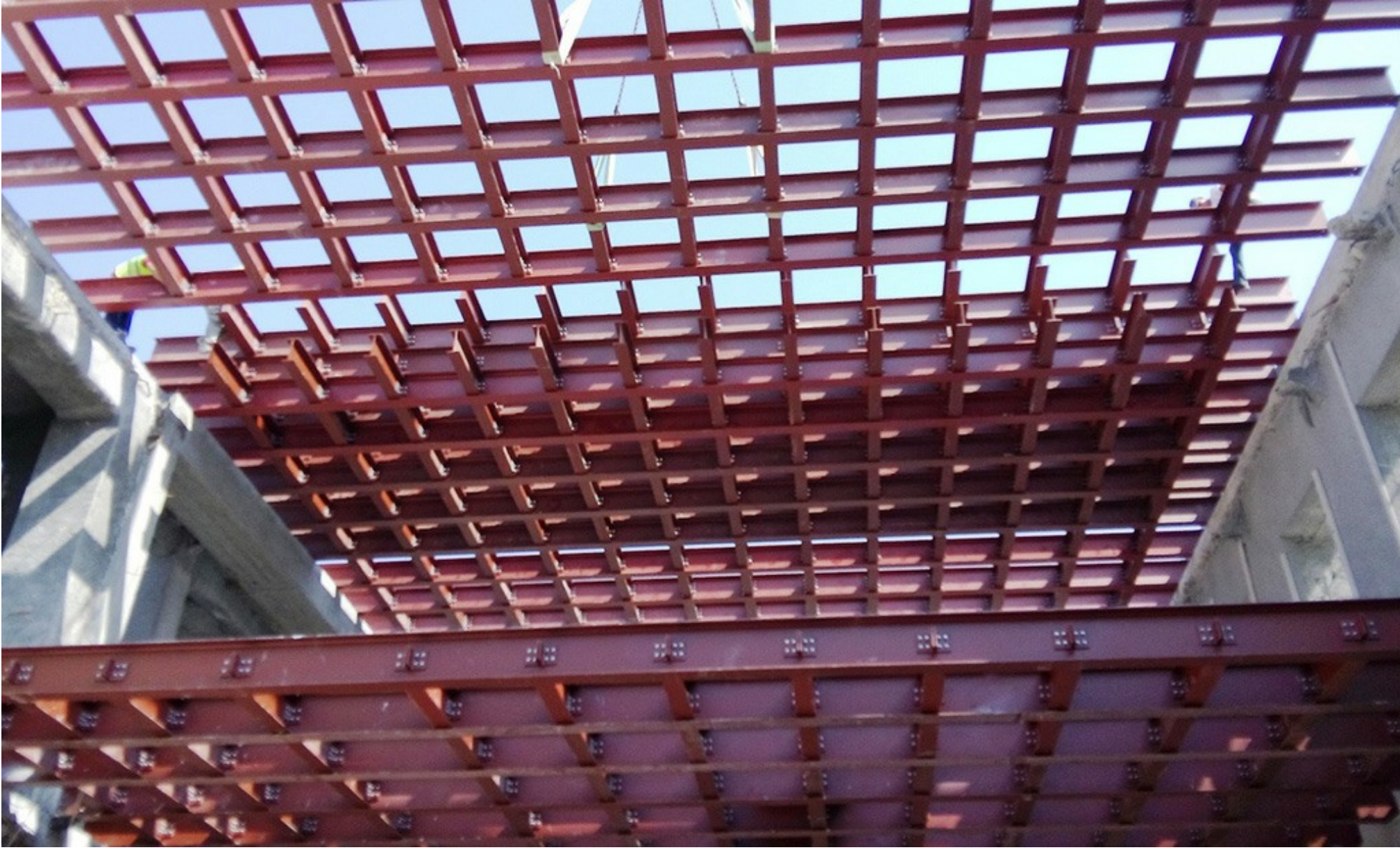


VOUTSADAKIS
STRUCTURAL STEEL
CONSTRUCTIONS
1969



COMMERCIAL STORES

SAMOS CULTURAL CENTER - ROMVOS SA

This project involved the addition of two levels with a total surface area of 1.200 sq.m. at the Epicurean Convention and Cultural Center in Samos.

The project included the supply and industrial processing of the metal frame for both levels.

The main feature of the structure is the absence of metal support columns, as the main beams were mounted on a parapet and "nests" which were created on existing reinforced concrete elements.

CLIENT	ROMVOS SA
LOCATION	SAMOS
YEAR OF CONSTRUCTION	2016-2017
WEIGHT	150 TN

Ntampasi Str., St.Thomas Place, 32011

Inofita Viotia