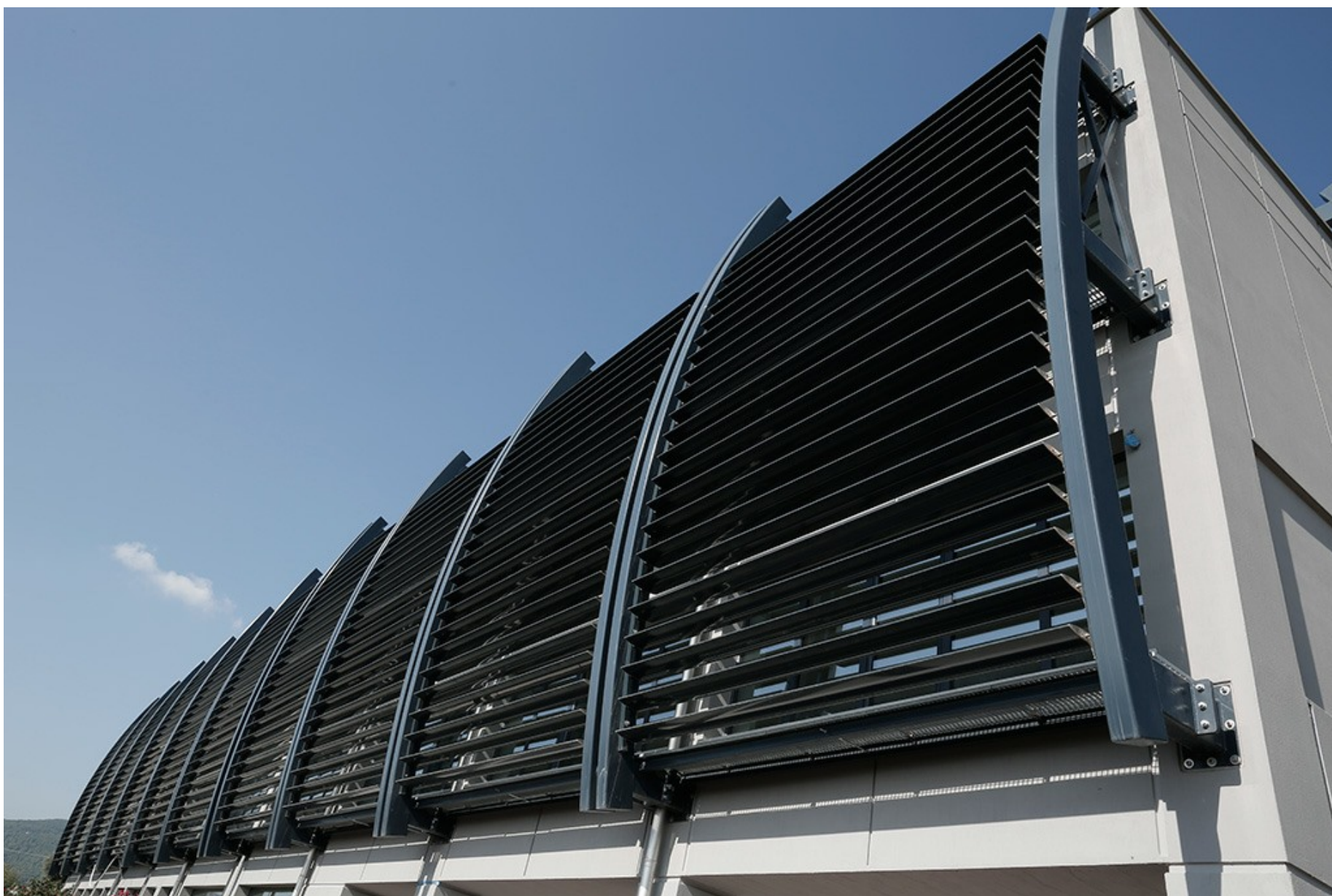




VOUTSADAKIS
STRUCTURAL STEEL
CONSTRUCTIONS
1969



EXTERNAL STEELWORK

BUILDING FACADE - YACHTING PROTECTION LTD

Renovation of the facades of a building in Kapandriti, Attica.

The project involved the construction and installation of exterior reinforced concrete shading frames on three sides of an existing building. Behind the outer shading frames three level metal access passageways lined with electrically pressed grates have been built.

CLIENT

YACHTING PROTECTION LTD

LOCATION

KAPANDRITI, ATTICA

YEAR OF CONSTRUCTION

2013

DIMENSIONS

800 sqm

Ntampasi Str., St.Thomas Place, 32011

Inofita Boeotia

HELLENIC BUS. REGISTRY No: 13674517000